



Cattle Hide Color Requirements

POINTS TO REMEMBER

1. UIB only accepts black and red Angus cattle. Cattle shall be solid black or red with no other color behind the shoulder or above the flanks, tail excluded.

2. NO Red Roan (shorthorn), Brindle, Charolais influenced, or Hereford marked cattle.

3. Must have red or black nose

4. NO cattle of dairy confirmation

NOTE: Cattle of non-program conformance will be discounted \$55.00/cwt of hot carcass weight.

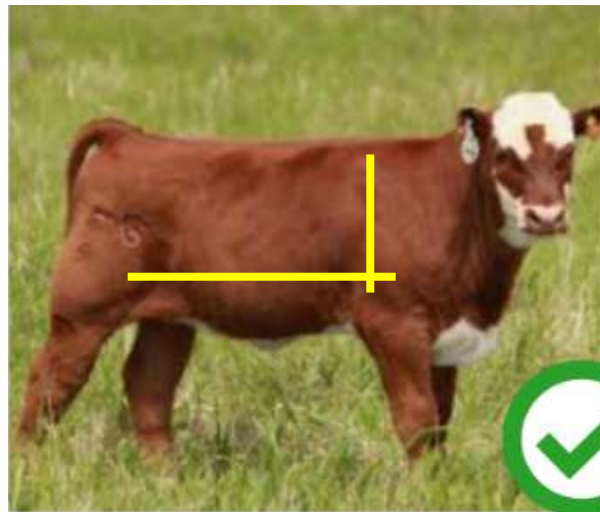
**Know your farmer,
know your beef!**

ACCEPTABLE MARKED RED ANGUS AT UIB

Per the Red Angus Association of America Live Animal Specifications

2.1 Genotype:

Cattle eligible for Angus influence beef programs based on the genotype portion of the requirement must have positive identification (ear tags, tattoos, brands, etc.) and be traceable back to provable (e.g., registration papers) Red Angus parentage. Cattle enrolled in the RAAA, Red Angus Feeder Calf Certification PVP qualify by being traceable to one registered parent (typically sire) and have the Red Angus Feeder Cattle Certification Program yellow tag (program compliant visual, EID and/or EID combo tag).



Red Angus

NOT ACCEPTABLE CATTLE AT UPPER IOWA BEEF

Per the Red Angus Association of America Live Animal Specifications

