



Cattle Hide Color Requirements

POINTS TO REMEMBER

1. UIB only accepts black and red Angus cattle. Cattle shall be solid black or red with no other color behind the shoulder or above the flanks, tail excluded.

2. NO Blue Roan, Charolais, or Simmental cattle

3. NO Pinzgauer or Longhorn cattle markings

4. NO cattle of dairy confirmation

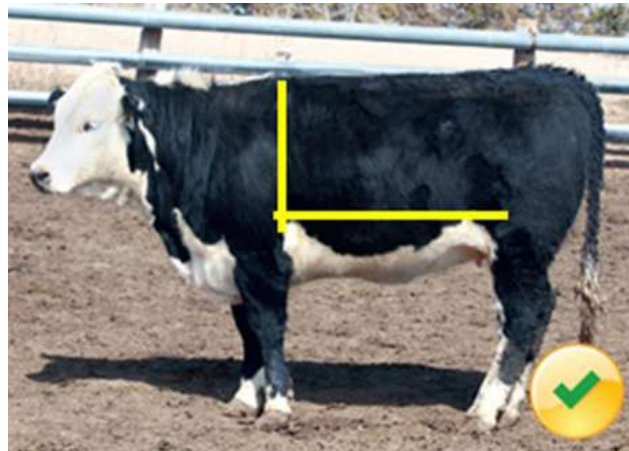
NOTE: Cattle of non-program conformance will be discounted \$55.00/cwt of hot carcass weight.

Know your farmer,
know your beef!

ACCEPTABLE BLACK ANGUS AT UPPER IOWA BEEF Per the American Angus Association Specification Guideline

2.2 Phenotype: "behind the shoulder" and "above the flanks"

Cattle eligible for certification in Angus influence beef programs based on phenotype (appearance) will have a male body that must be solid black, with no other color behind the shoulder, above the flanks, or breaking the midline behind the shoulders excluding the tail.



NOT ACCEPTABLE CATTLE AT UPPER IOWA BEEF Per the American Angus Association Specification Guideline

